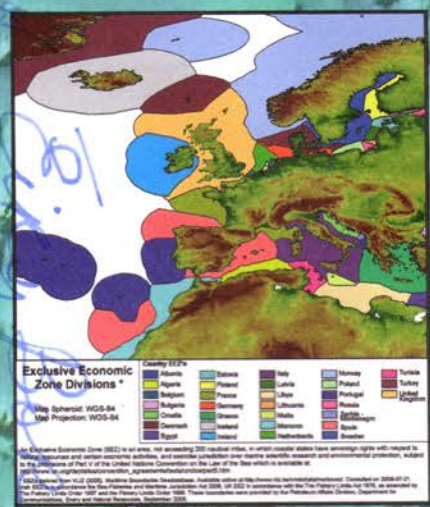
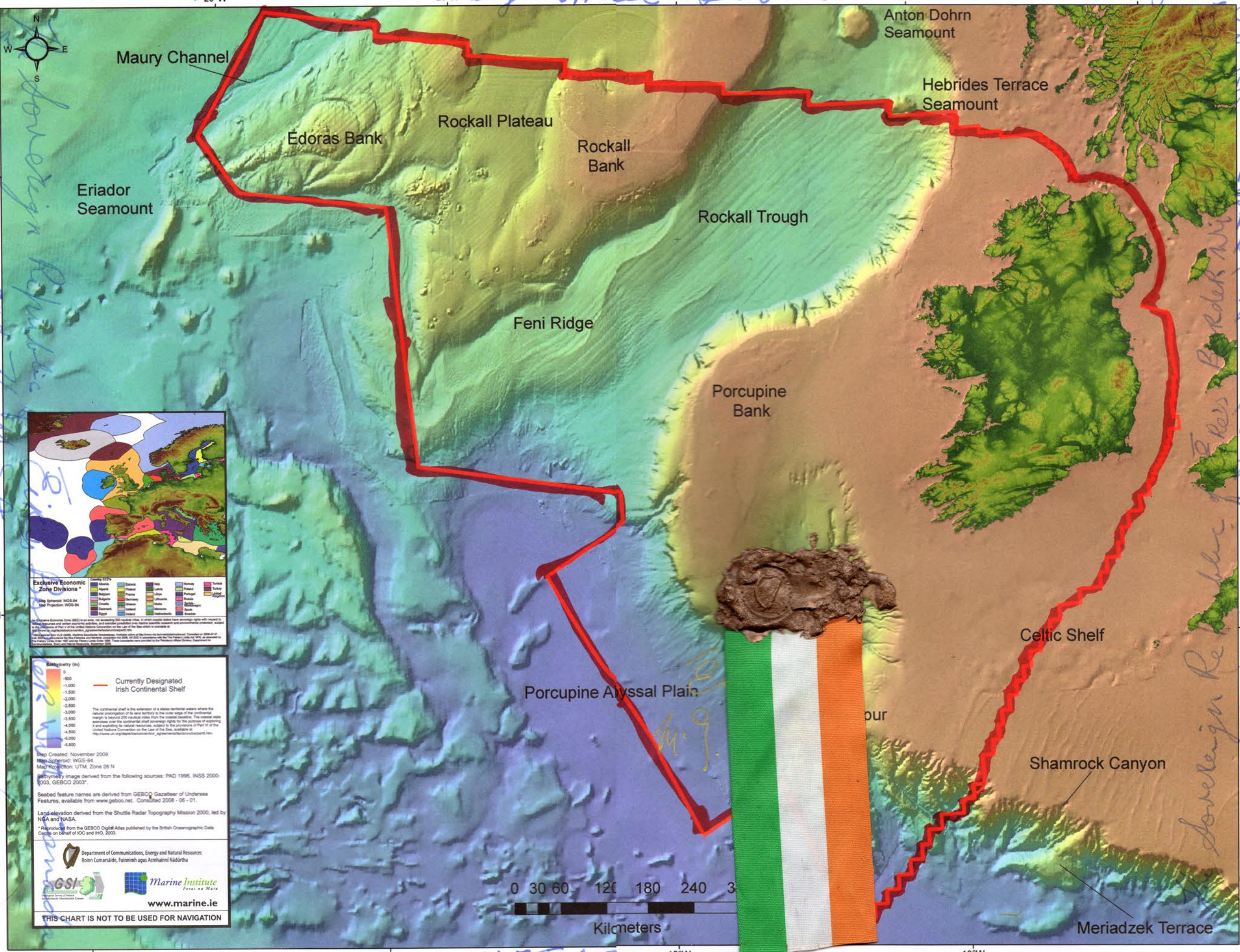


The Sovereign Republic of Eike

The Real Map of Ireland

21-1-1919. J. William James M. Guire

The Sovereign Republic of Eike's Territory and Seas



Bathymetry (m)

0
-500
-1,000
-1,500
-2,000
-2,500
-3,000
-3,500
-4,000
-4,500
-5,000

— Currently Designated Irish Continental Shelf

The continental shelf is the extension of a state's territorial waters where the natural prolongation of its land territory to the outer edge of the continental margin is beyond 200 nautical miles from the coastal baseline. The coastal state exercises over the continental shelf sovereign rights for the purpose of exploring it and exploiting its natural resources, subject to the provisions of Part VI of the United Nations Convention on the Law of the Sea, available at: http://www.un.org/Depts/los/convention_agreements/text/convention.htm.

Map Created: November 2009
Map Spheroid: WGS-84
Map Projection: UTM, Zone 28 N
Bathymetry image derived from the following sources: IAD 1996, INSS 2000-2003, GEBCO 2003.

Seabed feature names are derived from GEBCO Gazetteer of Undersea Features, available from www.gebcocenter.com. Consulted 2008-06-01.

Land elevation derived from the Shuttle Radar Topography Mission 2000, led by NASA and NASA.

* Reproduced from the GEBCO Digital Atlas published by the British Oceanographic Data Centre on behalf of IOC and IHO, 2003.

Department of Communications, Energy and Natural Resources
Roinn Cumarsáide, Fuinnemh agus Acmhainní Náidórtha

GSI Marine Institute
www.marine.ie

THIS CHART IS NOT TO BE USED FOR NAVIGATION

Claim Sovereignty over the Territory of the Sovereign Republic of Eike. Rivers, Lakes Seas, Fishing Rights, Mineral Rights, Licenses and all the assets of the State on Behalf of the Sovereign Republic of Eike and the Irish and Jewish Republics Brotherhood Signed on this Day 21-1-2020

William James M. Guire
President of the Irish and Jewish Republics Brotherhood
President of the Sovereign Republic of Eike
President of the Sovereign Digital Economy Government

Sovereign Republic of Eike

6 H 9
Vaughan's Hotel Dublin

1155 AD

AG